

OVERALL CONDITION

NORMAL

IS THE CURRENT CTS REPORT ATTACHED?

N/A

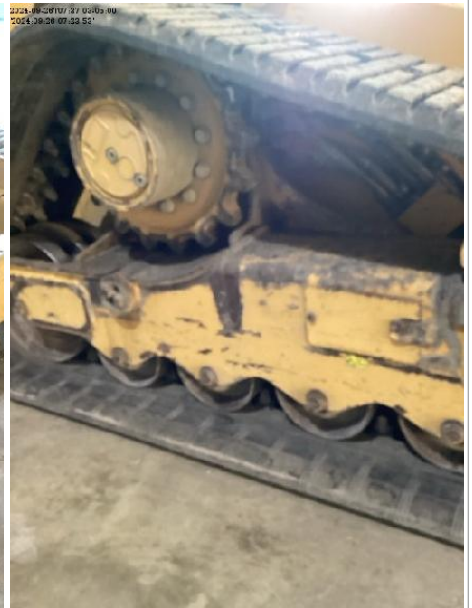
IMAGES



IMAGES 8_1.jpg



IMAGES 8_2.jpg



IMAGES 8_3.jpg



IMAGES 8_4.jpg

GROUND ENGAGING & WEAR PARTS

BUCKET

NORMAL

BLADE

N/A

RIPPER

N/A

WINCH

N/A

IMAGES



IMAGES 10_1.jpg



IMAGES 10_2.jpg



IMAGES 10_3.jpg

ELECTRICAL

LIGHTS

NORMAL

WARNING DEVICES

NORMAL

CAB ELECTRICAL CONTROLS

NORMAL

OVERALL CONDITION

NORMAL

IMAGES



IMAGES 5_1.jpg



IMAGES 5_2.jpg



IMAGES 5_3.jpg



IMAGES 5_4.jpg

CAB FUNCTIONS

CAB CLEANLINESS
OVERALL CONDITION

NORMAL
NORMAL

IMAGES



IMAGES 6_1.jpg



IMAGES 6_2.jpg

APPEARANCE

WINDOWS/MIRRORS OVERALL CONDITION

NORMAL

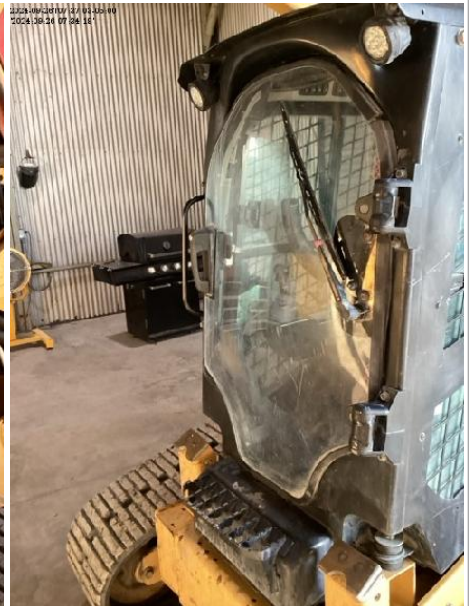
IMAGES



IMAGES 11_1.jpg



IMAGES 11_2.jpg



IMAGES 11_3.jpg

ATTACHMENTS

HOW MANY ATTACHMENTS DOES EQUIPMENT HAVE?

NONE

ADDITIONAL OFF-HIRE INSPECTION QUESTIONS

HAS THE MACHINE BEEN USED SINCE IT WAS MADE AVAILABLE? Yes

PARTS REMOVED FOR OVER HEIGHT RESTRICTIONS? None

ADDITIONAL COMMENTS/REQUIRED IMAGES

UPLOAD PICTURES OF 4 CORNERS, HOUR METER/ODOMETER, INSIDE OF CAB

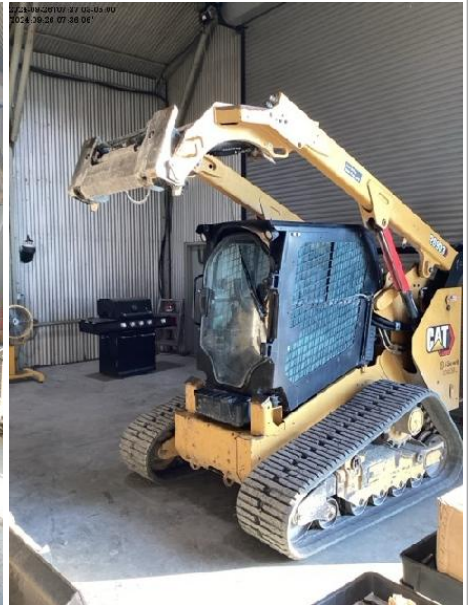
IMAGES OF UNIT PRIOR TO TRANSPORT OR UPON ARRIVAL



IMAGESUNITPRIORTRANS_1.jpg



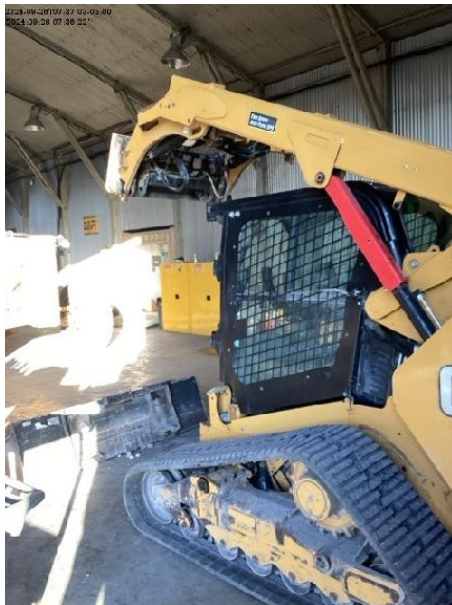
IMAGESUNITPRIORTRANS_2.jpg



IMAGESUNITPRIORTRANS_3.jpg



IMAGESUNITPRIORTRANS_4.jpg



IMAGESUNITPRIORTRANS_5.jpg

EMAIL SUBMISSION TO ANOTHER USER

EMAIL SUBMISSION TO ANOTHER USER

NO